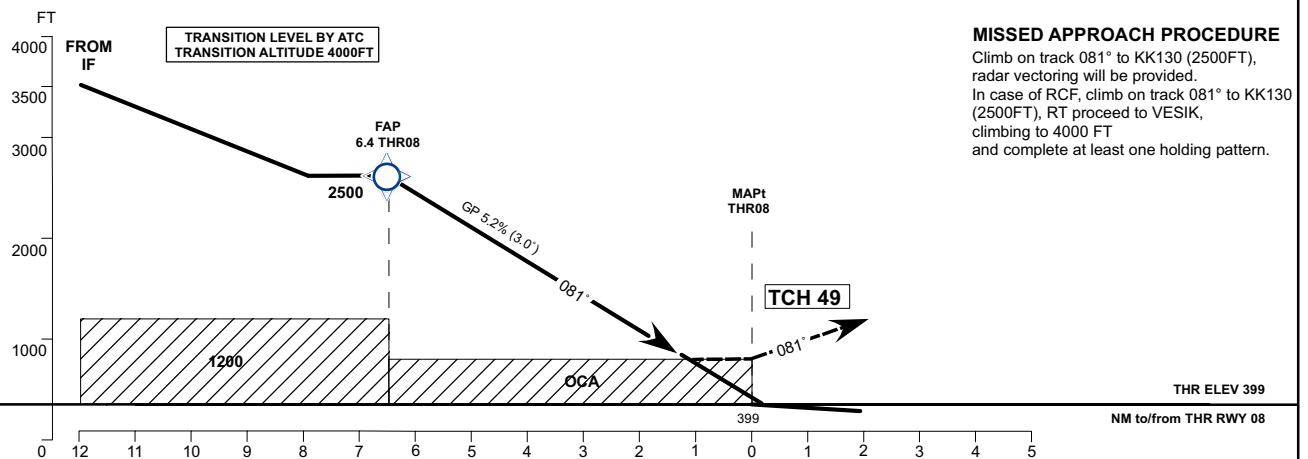
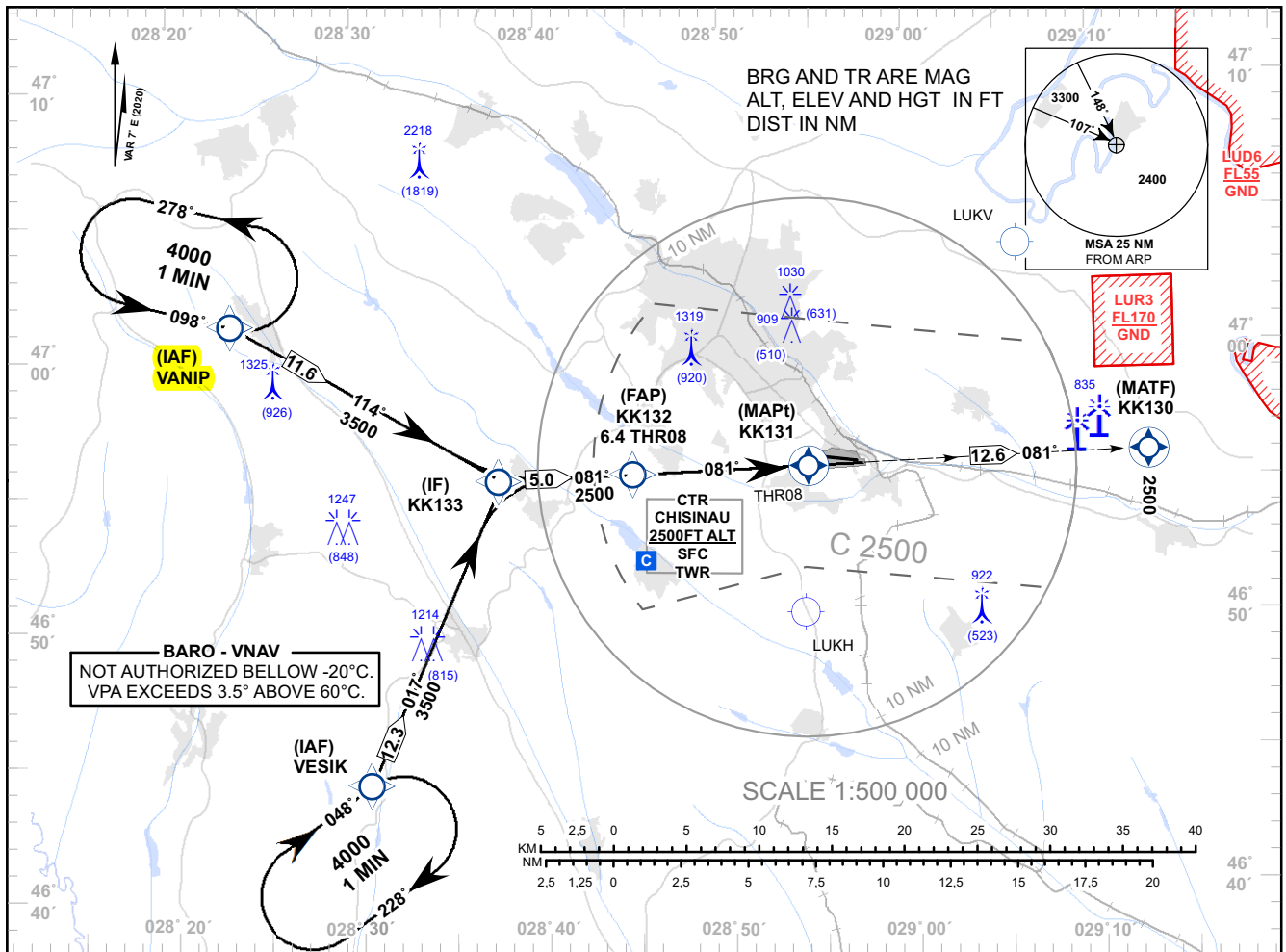


**INSTRUMENT APPROACH
CHART - ICAO**

 AD ELEV 399 FT
 HEIGHTS RELATED TO
 THR RWY 08 ELEV 399 FT

 APP: 133.300 MHz
 TWR: 118.100 MHz
 ATIS: 125.225 MHz

**CHISINAU/Intl (LUKK)
RNP RWY 08
(LNAV&LNAV/VNAV ONLY)**

MISSED APPROACH PROCEDURE

Climb on track 081° to KK130 (2500FT),
radar vectoring will be provided.
In case of RCF, climb on track 081° to KK130
(2500FT), RT proceed to VESIK,
climbing to 4000 FT
and complete at least one holding pattern.

OCA(OCH)	A	B	C	D
LNAV	770 (380)	770 (380)	770 (380)	770 (380)
LNAV / VNAV	689 (290)	689 (290)	689 (290)	689 (290)

DIST THR	7	6	5	4	3	2	1
ALTITUDE (Height)	2500 (2101)	2359 (1960)	2040 (1641)	1722 (1323)	1404 (1005)	1085 (686)	767 (368)

Timing not Authorised for Defining the MAPt.

Ground Speed	KT	80	100	120	140	160	180
DISTANCE FAP-MAPt 6.4NM	MIN:SEC	04:50	03:52	03:13	02:46	02:25	02:09
Rate of Descent (5.2%)	FT/MIN	425	531	637	743	849	955

Changes: CHISINAU CTR Changed. IF From 3500FT. Missed APCH Updated. "LUKV/National" Aerodrome Added.

**INSTRUMENT APPROACH
CHART - ICAO**
AD ELEV – 399FT
 HEIGHTS RELATED TO
 THR RWY 08 - ELEV 399FT

CHISINAU/Intl (LUKK)
RNP RWY 08
(LNAV&LNAV/VNAV ONLY)
TABULAR DESCRIPTION

RNP RWY 08											
Serial Number	Path descriptor	Waypoint Identifier	Fly-over	Course °M (°T)	°MAG VAR	Distance (NM)	Turn Direction	Altitude (FT)	Speed limit (Kt)	°VPA/ TCH (FT)	Navigation Specification
010	IF	VANIP	-	-	+7.0	-	-	4000	-	-	RNP APCH
020	TF	KK133	-	114 (120.6)	+7.0	11.6	-	+3500	-210	-	RNP APCH
010	IF	VESIK	-	-	+7.0	-	-	4000	-	-	RNP APCH
020	TF	KK133	-	017 (024.0)	+7.0	12.3	-	+3500	-210	-	RNP APCH
010	IF	KK133	-	-	+7.0	-	-	+3500	-	-	RNP APCH
020	TF	KK132	-	081 (088.3)	+7.0	5.0	-	@2500	-	-	RNP APCH
030	TF	RW08/ KK131	Y	081 (088.3)	+7.0	6.4	-	@448	-	3.00/49	RNP APCH
040	CF	KK130	Y	081 (088.3)	+7.0	12.6	-	2500	-	-	RNP APCH

WAYPOINT LIST

RNP RWY 08		
Waypoint Identifier	Coordinates	
IAF VANIP	47°01'11.0"N	028°23'13.0"E
IAF VESIK	46°44'03.0"N	028°30'27.0"E
KK133	46°55'16.6"N	028°37'44.9"E
KK132	46°55'26.4"N	028°45'02.5"E
RW08/KK131	46°55'38.34"N	028°54'26.51"E
KK130	46°55'59.5"N	029°12'53.8"E